



AISHE-C-22377

कार्यालय प्राचार्य, शासकीय पं. माधवराव सप्रे महाविद्यालय
पेण्डारोड, जिला-गौरेला पेण्ड्रा मरवाही (छ.ग.)

College Code - 2806

Phone No.-07751220108

Email-pmrscollege2019@gmail.com

2.3.1 Student centric methods, such as experiential learning, participative learning and problem solving methodologies are used for enhancing learning experiences

Responses:

The following documents includes:

- 1. Description on Student centric method**
- 2. Images of ICT, PGDCA rooms**
- 3. Images of Lab rooms**
- 4. Images of Practical/Herbarium file**

PRINCIPAL

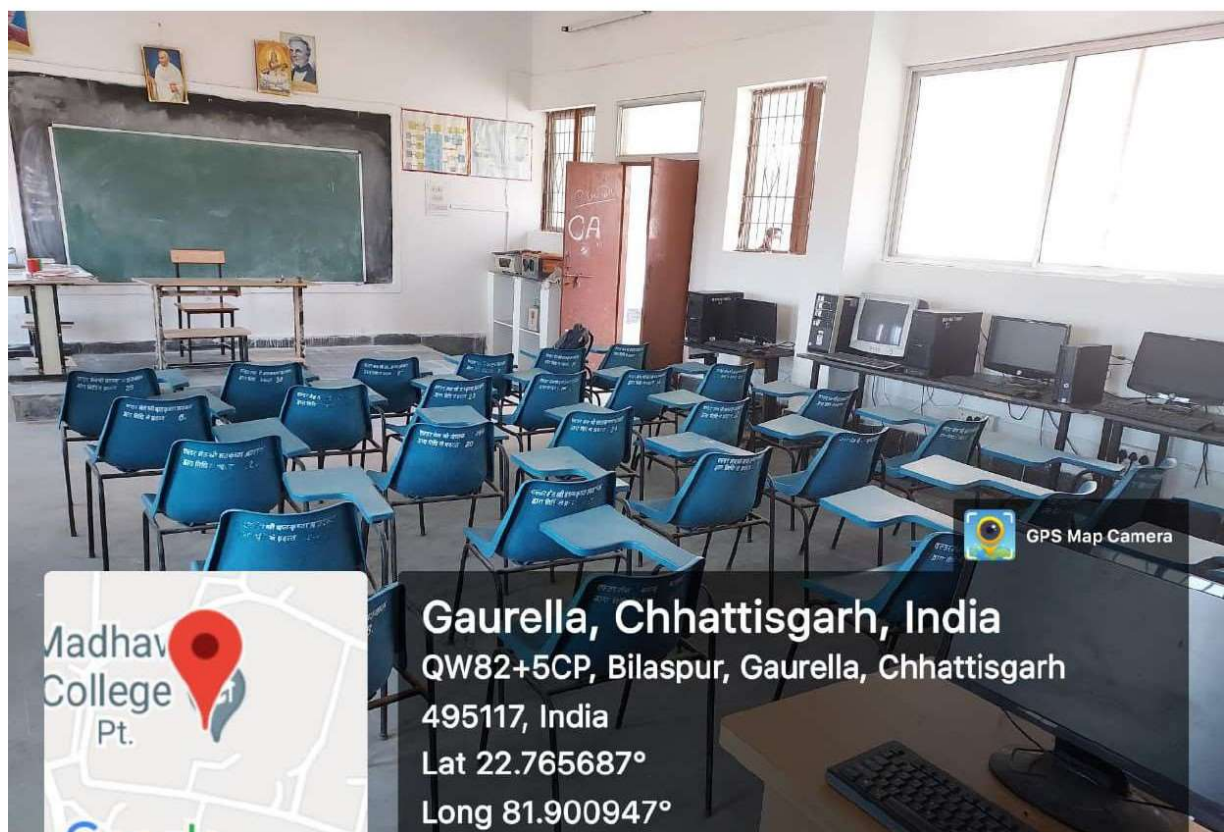
Govt. Pt. Madhav Rao Sapre
College-Pendra Road
Distt. Gaurella-Pendra-Marwahi (C.G.)

1. Description on Student centric method

The vision and mission of Government Pt. Madhav Rao Sapre College Pendra Road states that the entire process of the college is student oriented and focused on their overall development. Many innovative teaching learning methods are used for the academic enhancement in teaching-learning process as per the suggestions and guidelines of the IQAC. Efforts are taken to make teaching-learning more students centric and making it more experiential, participatory and interactive. Various activities like group discussions, seminars, projects etc. are conducted and modules and posters are displayed by the students for enhancing learning experiences. Some departments of college organize study tours and field visits. All stakeholders of the college are well aware regarding the aspirations of the students. The college follows the educational calendar issued by the University. The college is stringing to produce semiconducting atmosphere for holistic development of students. Each faculty member has strived to make their classroom session interactive, encouraging students to ask questions to ensure they understand the topic issue as well as this followed by many more student-focused such than group discussion, debate, In science stream & Geography, Home Science in arts stream the made of teaching is both theoretical and practical. Experiential learning- Practical approach is adopted in all the disciplines and programmes of study. Many programmes consist of weekly seminars on different topics to give the students practical and experiential learning. The students are given opportunity of presenting various topics of their choice through this process. Teachers demonstrate and student perform practical in the Laboratory under observation. Experimental learning creates laboratory awareness, handling of instruments, glass wares and chemicals. First year student of all stream under take project in Environmental study. Engaging Student in community based activities and service with the help of NSS Volunteers such as Benefits of yoga and aware people about how addiction of alcohol and tobacco is so much dangerous for their health which could affect their family and society etc. are propagated to the villagers. So they are getting the chance to learn how valuable and fulfilling it can be giving back to other. The college makes student union appointments every year under Chhatisgarh government regulations. In which students are appointed president, vice president, secretaries and co-secretaries to instill the quality of leadership in students.

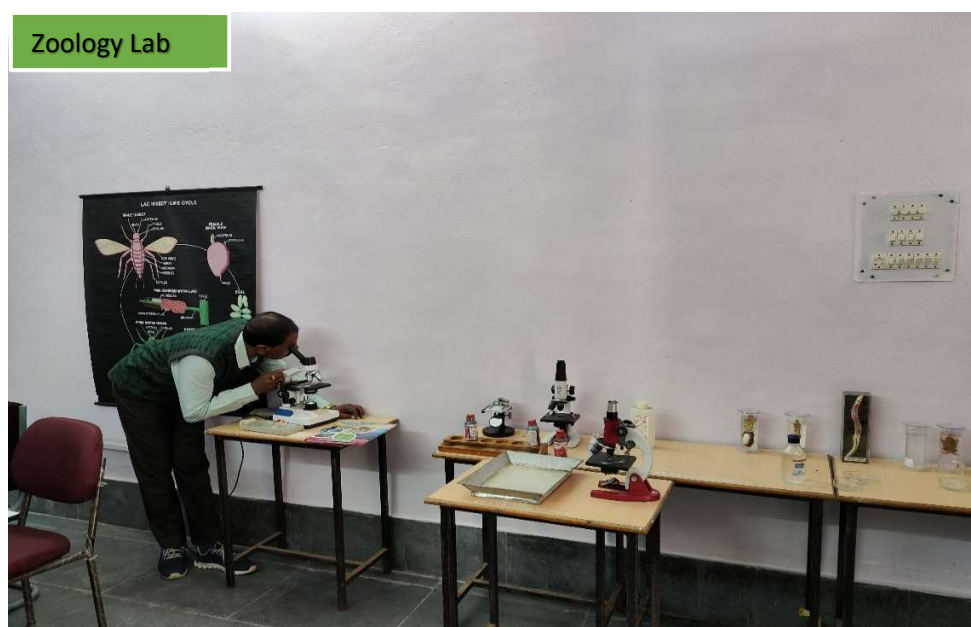

PRINCIPAL
Govt. Pt. Madhav Rao Sapre
College-Pendra Road
Distt. Gaurella-Pendra-Marwahi (C.G.)

2. Images of ICT, PGDCA rooms




PRINCIPAL
Govt. Pt. Madhav Rao Sāra
College-Pendra Road
Distt. Gaurella-Pendra-Marwahi (C.G.)

3. Images of Lab/Practical rooms



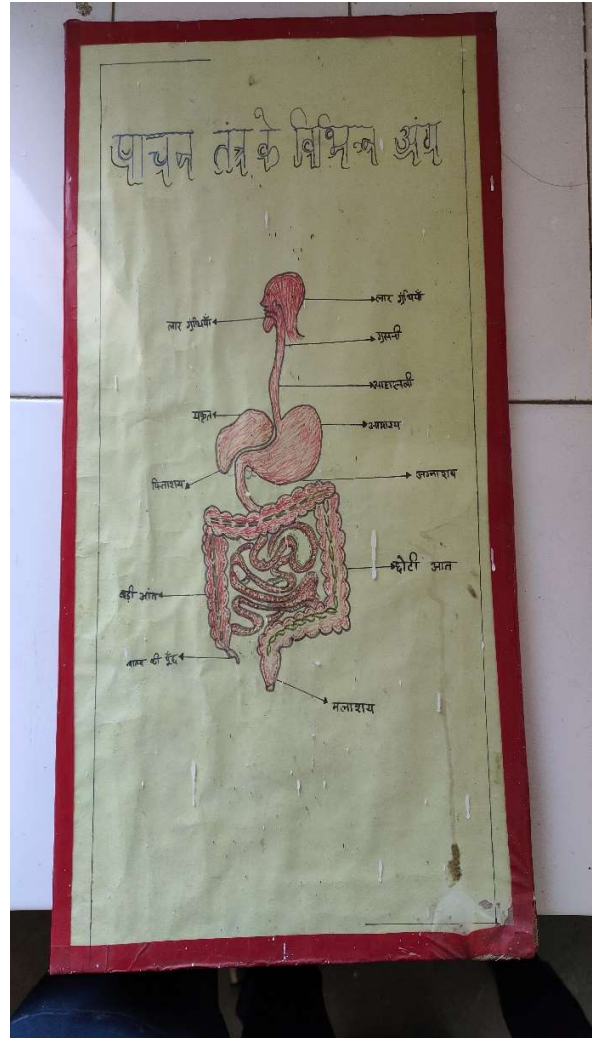
Home Science Lab


PRINCIPAL
Govt. Pt. Madhav Rao Sapre
College-Pendra Road
Distt. Gaurella-Pendra-Marwahi (C.G.)



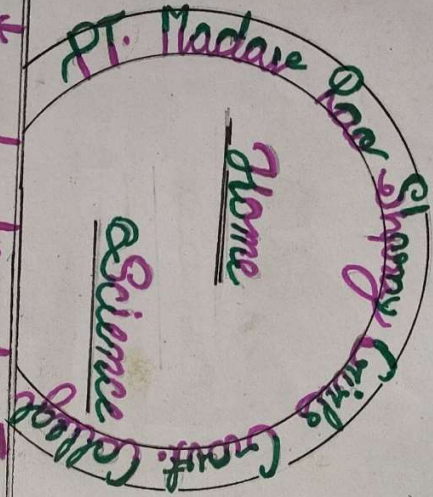
Ch
PRINCIPAL
 Govt. Pt. Madhav Rao Sāpre
 College-Pendra Road
 Distt. Gaurella-Pendra-Marwahi (C.G.)

4. Images of Practical/Herbarium File




PRINCIPAL
Govt. Pt. Madhav Rao Sapre
College-Pendra Road
Distt. Gaurella-Pendra-Marwahi (C.G.)

Session - 2013



ROLL NO

Topic Introduction to Textiles & Fibres

Name of Student

Zeba Khan

B. A. II Year

Pendra Road

Roll No.:

Name of Teacher

Dr. Minakshi Mishra

Home Science

Department

PRINCE

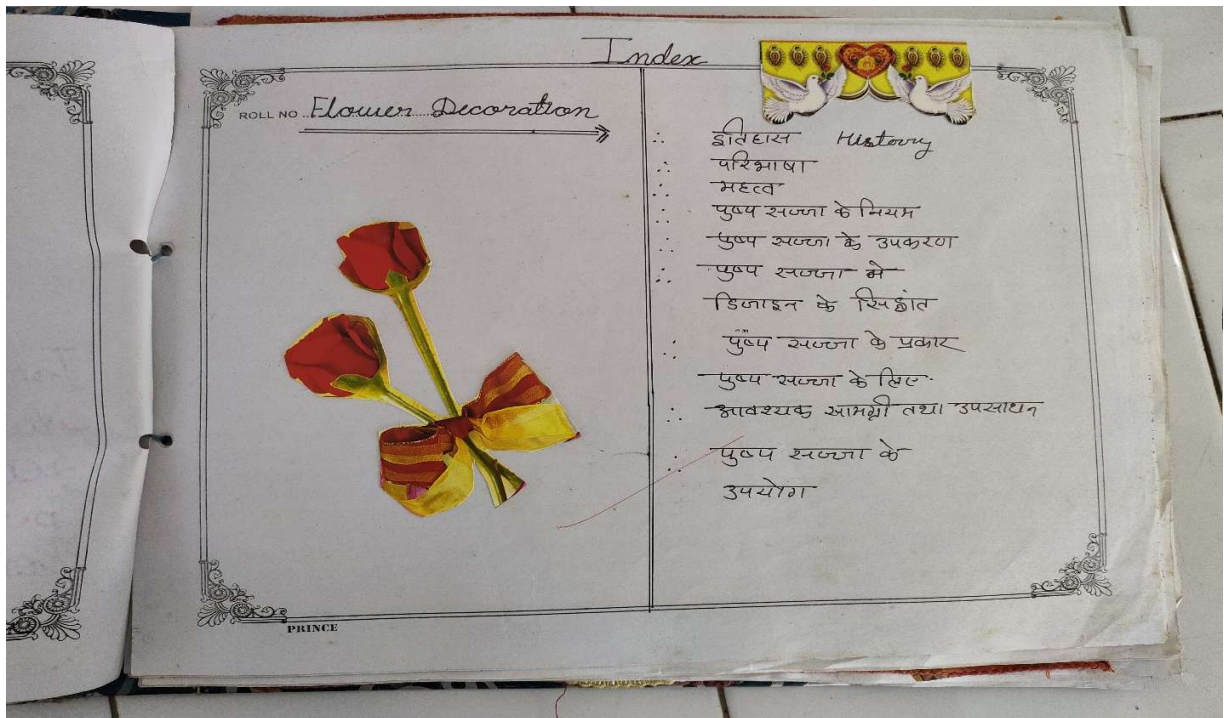
Ch

PRINCIPAL

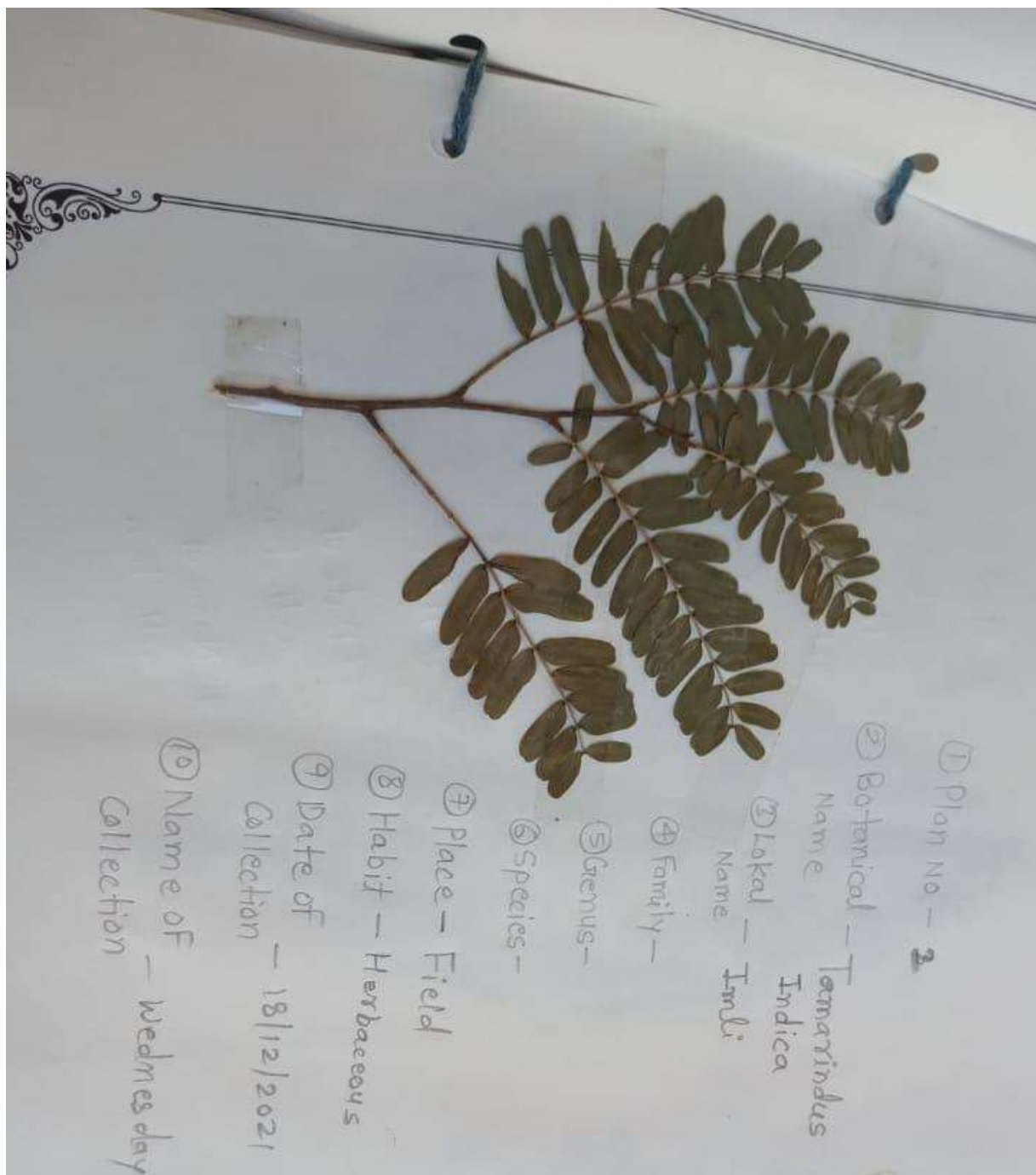
Govt. Pt. Madhav Rao Sapre
College-Pendra Road
Distt. Gaurella-Pendra-Marwahi (C.G.)




PRINCIPAL
 Govt. Pt. Madhav Rao Sapre
 College-Pendra Road
 Distt. Gaurella-Pendra-Marwahi (C.G.)




PRINCIPAL
 Govt. Pt. Madhav Rao Sapre
 College-Pendra Road
 Distt. Gaurella-Pendra-Marwahi (C.G.)




PRINCIPAL
Govt. Pt. Madhav Rao Sapre
College-Pendra Road
Distt. Gaurella-Pendra-Marwahi (C.G.)